

How TLX RafterFit works

The performance of all TLX products is based on the formula:

$$R \approx d/\lambda + (1-\epsilon)$$

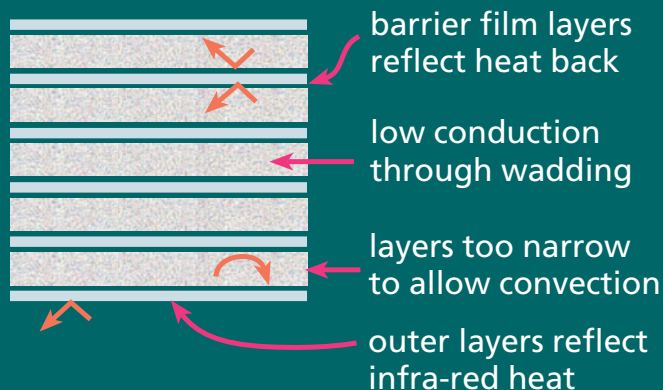
Where:

R is thermal resistance

d is the thickness of the core

λ is the thermal conductivity of the core

ϵ is the emissivity of the outer layers



TLX RafterFit combines a core air layer with mirrored surfaces that reflect infra-red heat. Web ultra-sonic technology joins materials without stitching which avoids air leakage or moisture contamination.

Building Control

TLX is the original certified multi-foil. The system is fault tolerant, air and vapour tight cutting CO₂ emissions and saves energy. The product has zero global warming and ozone depletion potential.

With an average home losing 70% of its heat through radiation, you will be glad to hear that RafterFit reflects more than 80% of radiation, playing a major part in reducing fuel bills and saving energy.

Web Dynamics can provide written guarantees for its U-value calculations.

It isn't often that a product ticks all the boxes but TLX RafterFit does just that and at three times quicker to install between rafters than 100% PIR, Web Dynamics believes RafterFit will soon become the product of choice for installers.

10 reasons to use RafterFit:

- Fits between rafters at 400mm or 600mm spacing
- Wings staple to rafter edge and set 50mm air gap
- Battening out optional
- Adjusts to irregular rafter widths
- Easy to cut and fit into awkward spaces
- Reflects more than 80% of radiation
- Air and vapour tight – cuts CO₂ emissions
- No face mask required – clean and hypoallergenic
- Easy-to-carry pack containing 10m weighs only 2.8kg (400mm) or 4.2kg (600mm)
- BBA certified, Part L compliant and qualifies for HIPS

For help and information call the **thermal hotline 01204 674 730** between 8am and 5pm, Monday – Friday

Made in Britain by Web Dynamics Ltd
Moss Lane
Station Road
Blackrod
Lancs. BL6 5JB

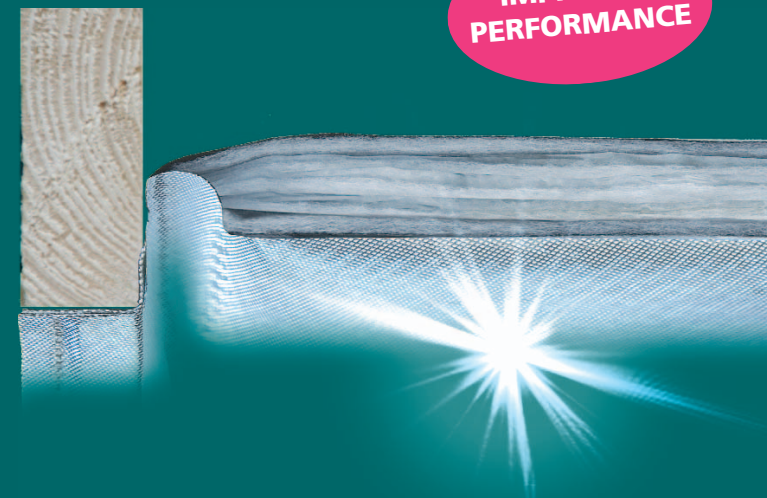
t 01204 695 666
f 01204 695 333

www.webdynamics.co.uk

©Web Dynamics Ltd 2008

TLX MULTI-FOIL INSULATION
RafterFit™

IMPROVED PERFORMANCE



- Achieves 0.2 with 50mm of PIR
- Reflects more than 80% of infra-red radiation
- 25 year guarantee

now available for 400mm & 600mm centres

thermal hotline **01204 674 730**
for technical advice



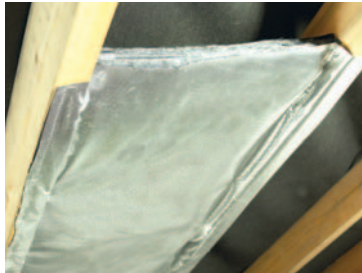
The multi-foil system certified to achieve 0.2

Installing RafterFit™

TLX RafterFit is a smart, new, narrow width multi-foil which can be used instead of PIR in 38x100mm or 50x100mm rafters, at 400mm or 600mm centres.



Staple the wings to the bottom edge of each rafter.



Push the core inside the space and staple to the sides of the rafters. The RafterFit should run taut across the rafters, ensuring a 50mm air space above the Rafterfit and a 20mm air space below.

That's all there is to it.

Optimising internal living space

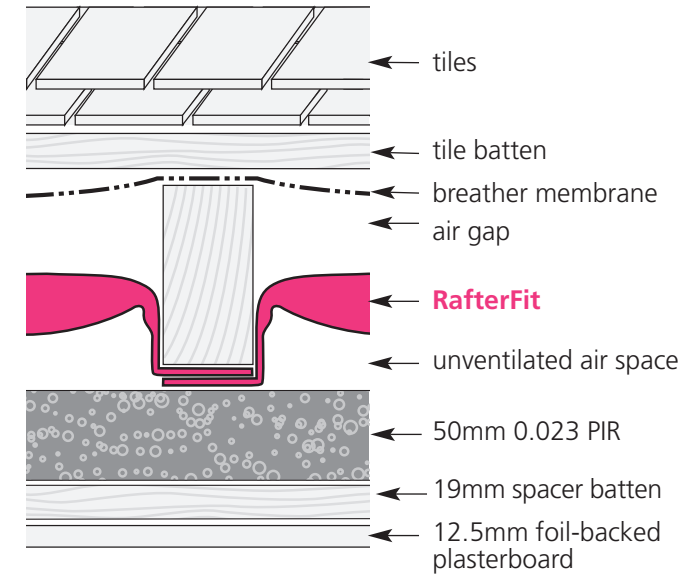
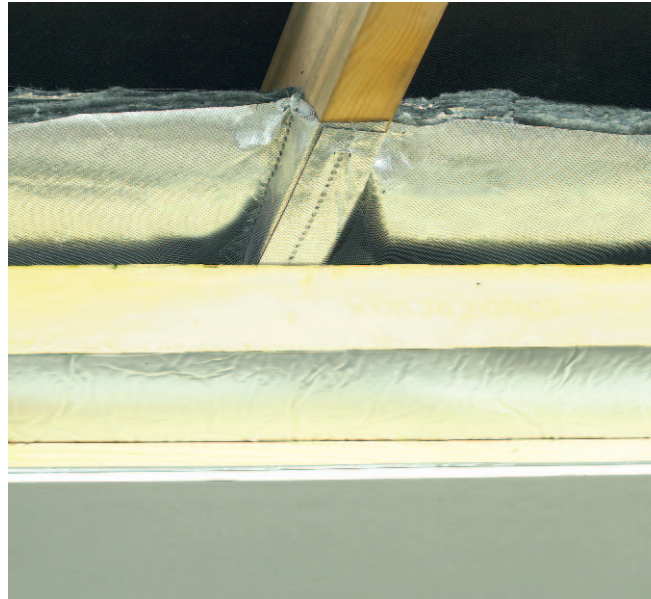
L1B states that: "Practical considerations with respect to an increase in structural thickness (particularly in terraced dwellings) may necessitate a lower performance target."

The table below sets out the thickness of PIR that has to be used with RafterFit to achieve the U-values shown.

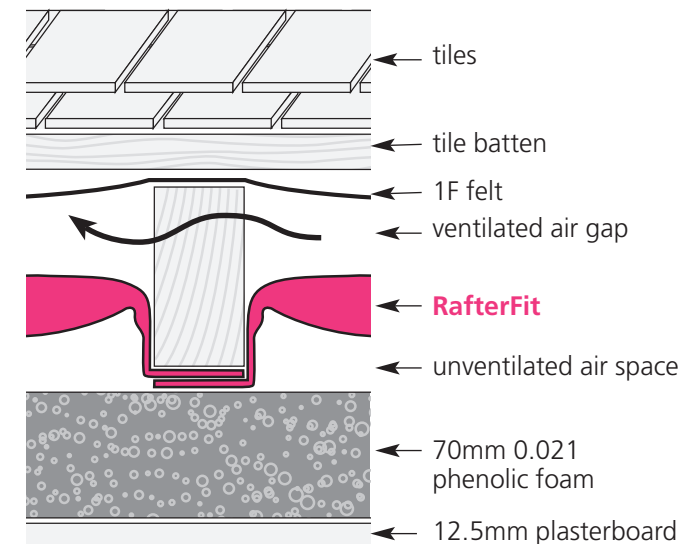
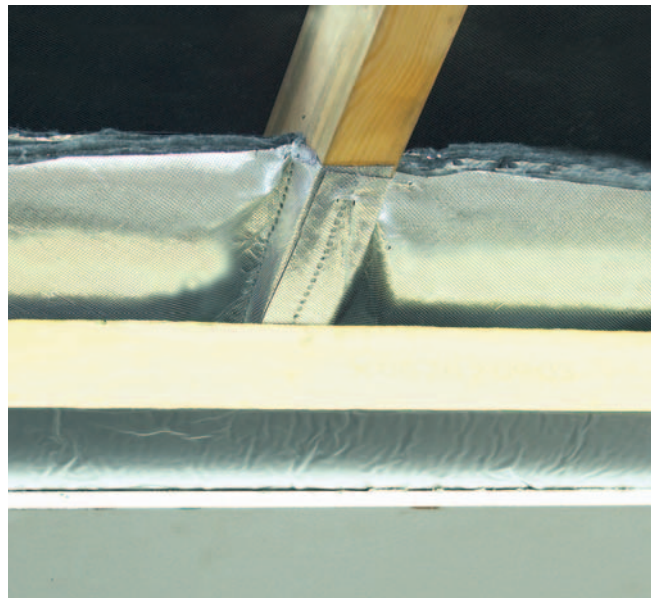
U-value	Example 1		Example 2	
	breather membrane	1F felt	breather membrane	1F felt
0.20	50mm	60mm	60mm	70mm
0.25	40mm	40mm	40mm	50mm

RafterFit™: 0.2 examples

1 RafterFit + 50mm PIR with battens



2 RafterFit + 70mm phenolic foam without battens



Patent applications: 2005297091; 2,584,932; 200580043095.4; EP05796146.8; 3045/DELNP/2007; 11/666,051; 0705558.5; PCT/GB2007/001029; 0710632.1; 0710632.1; 0716402.3 Patents granted: GB2432812; EP1105290